



BY (T)TRANS.EU

# DIGITAL FREIGHT PLATFORM DESIGNED FOR SHIPPERS

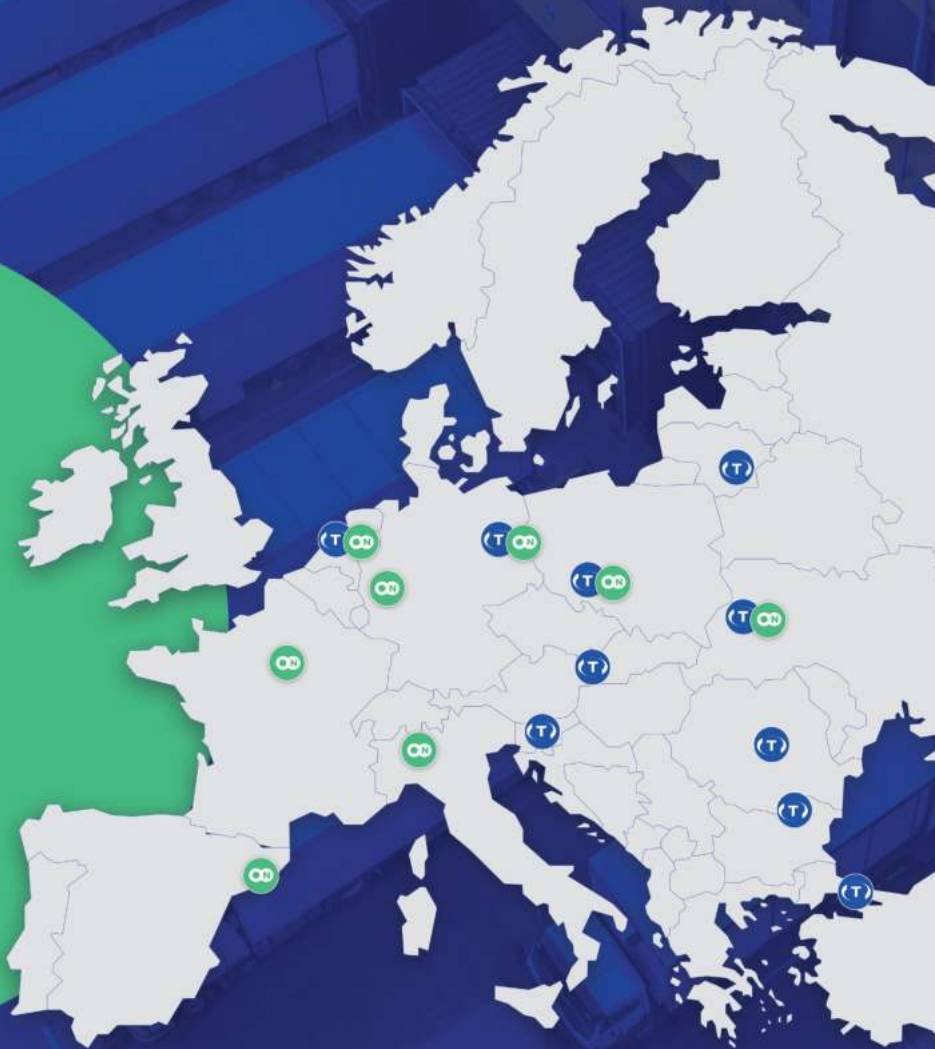
# CargoON is part of the Trans.eu Group

Trans.eu Group is a freight tech company established in 2004 which develops not only one of the biggest freight exchanges in Europe, but also several logistics digital platforms and services for road transport management, bringing together shippers, logistic operators, forwarders and carriers.



## A trusted partner in Freight Tech

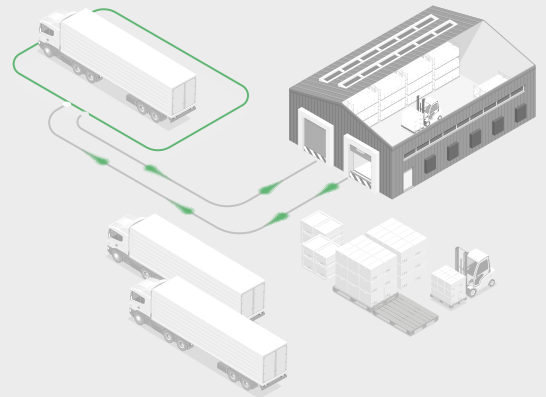
- ✓ ESTABLISHED IN 2004
- ✓ 100% PRIVATE EQUITY
- ✓ 45 COUNTRIES
- ✓ 12 BRANCHES
- ✓ + 40.000 CUSTOMERS
- ✓ + 1.000 EMPLOYEES



# WHY CARGOON?

**Save on logistics costs** and **have control** over the entire **supply chain**  
thanks to better collaboration with all stakeholders

- **Assign your loads in an optimised way** and gain access to more transport providers when required
- Gain **real-time visibility** of transportation execution
- **Manage your docks efficiently** and avoid costs from delays



## THE BEST PARTNER FOR DIGITALISATION

- Easy-to-use and collaborative solution
- Comprehensive coverage of all stages of the supply chain



## PLUG & PLAY

- Implementation ready in 4-6 weeks
- Standardised modules



## WE SUPPORT YOUR DIGITAL TRANSFORMATION

- European reach
- We are experts in Freight Tech and digital adaptation

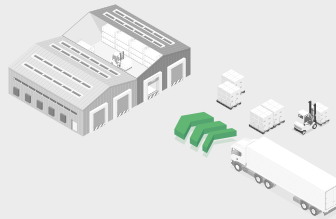
# END-TO-END DIGITALISATION

The modules included in CargoON enable **end-to-end digitalisation of your supply chain**. Thanks to a quick and easy modular implementation, you can save costs, increase productivity and boost transparency in your customer and supplier relations.



## FREIGHTS

Freight Order  
Management



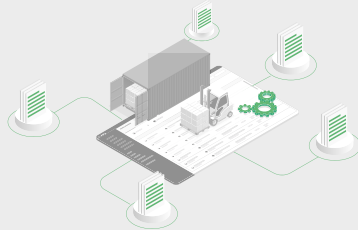
## DOCK SCHEDULER

Time Slot  
Management



## VISIBILITY

Full Digital  
Order Execution



## SIMPLE TENDERS

Quick and simple  
lane tenders



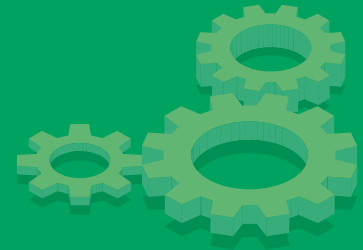
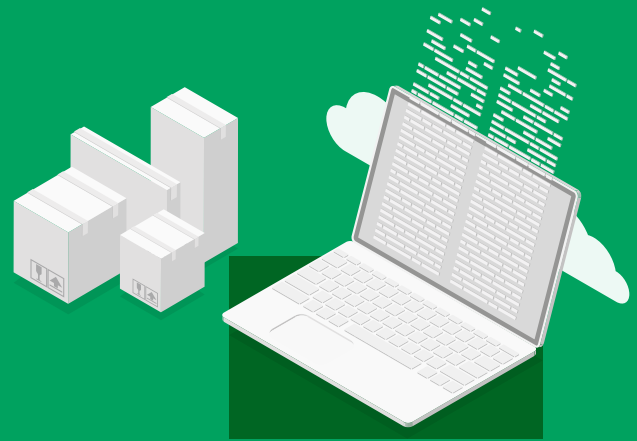
## REPORTS

Rate benchmarks  
and performance reports

# FREIGHTS

**Freight Order Management:** seamless creation and communication up to freight order acceptance

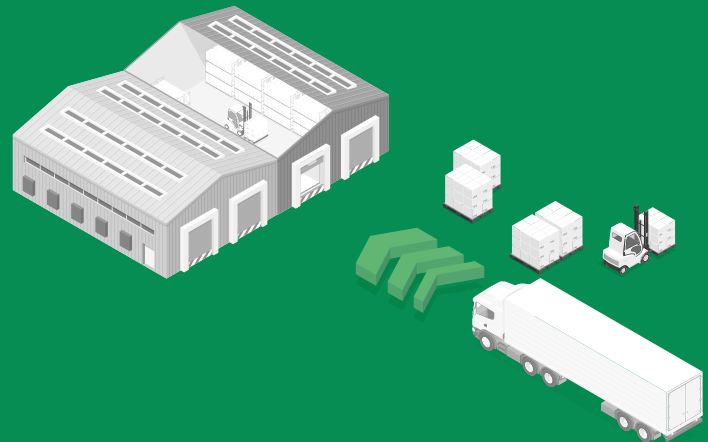
- All information is centralized for better access, sharing and compliance
- The best allocation engine ensuring speed and flexibility
- Access to transport capacity at any time in contract or spot modalities
- Flawless communication with internal and external stakeholders



# DOCK SCHEDULER

**Manage time slots efficiently:** increase your **warehouse handling capacity**

- Avoid queues and keep full control on your unloading and loading process
- Plan your resources in advance
- Digitalise communication for better collaboration between the logistics department, the warehouse and your transport partners



# VISIBILITY

**Real-time monitoring** and exception management at all stages of transport

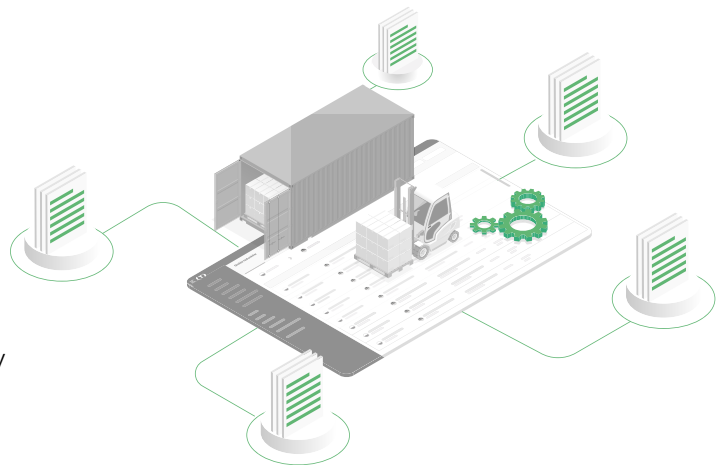
- Get ahead of unforeseen events and calculate additional costs
- Automatically calculate the estimated time of arrival (ETA)
- Offer visibility of the transportation status to your customer



# SIMPLE TENDERS

**Fast tenders** with your trusted carriers or within the Trans.eu community

- Driver shortage requires step to action
- Secure your partner network and keep transport capacity
- Manage tenders in 2-3 weeks



# REPORTS

**Rate benchmarks and performance reports** about your logistics processes

- Improve your efficiency
- Make decisions based on predictive statistics
- Access consistent information on performance and market





## THEY TRUSTED US:



”

“Before project implementation, the percentage of delivery issues was 30.4% of all transports. Today, this rate is approaching 3-4%.”

**Svitlana Surova,**  
**Interpipe Logistics Director**  
**Metallurgical sector**



”

“Two months after implementing the solution we were able to reduce vehicle handling time up to 40%. We also have much better and consistent communication, whereas the warehouse work is scheduled and distributed evenly throughout the day.”

**Justyna Lusztak,**  
**Logistics and Transport Service**  
**Specialist, Boryszew SA**  
**Chemical Sector**



**Our solutions  
are recognised  
by customers  
and industry  
leaders**

**Dock Scheduler**  
named the best  
solution for optimising  
warehouse, transport  
and distribution costs  
(September 2022)







BY (T)TRANS.EU

WELCOME TO THE NEW WAY  
OF TRANSPORT MANAGEMENT

#TurnItON

[www.cargo.on.eu](http://www.cargo.on.eu)